

# **ab100501 – DKK1 (Dickkopf-1) Human ELISA Kit**

## **Instructions for Use**

For the quantitative measurement of Human DKK1 in serum, plasma and cell culture supernatants.

This product is for research use only and is not intended for diagnostic use.

# Table of Contents

---

## INTRODUCTION

1. BACKGROUND	2
2. ASSAY SUMMARY	3

## GENERAL INFORMATION

3. PRECAUTIONS	4
4. STORAGE AND STABILITY	4
5. MATERIALS SUPPLIED	4
6. MATERIALS REQUIRED, NOT SUPPLIED	5
7. LIMITATIONS	5
8. TECHNICAL HINTS	6

## ASSAY PREPARATION

9. REAGENT PREPARATION	7
10. STANDARD PREPARATIONS	8
11. SAMPLE PREPARATION	10
12. PLATE PREPARATION	10

## ASSAY PROCEDURE

13. ASSAY PROCEDURE	11
---------------------	----

## DATA ANALYSIS

14. CALCULATIONS	12
15. TYPICAL DATA	13
16. TYPICAL SAMPLE VALUES	14
17. ASSAY SPECIFICITY	15

## RESOURCES

18. TROUBLESHOOTING	16
19. NOTES	17

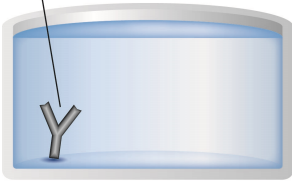
## 1. BACKGROUND

Abcam's DKK1 (Dickkopf-1) Human ELISA (Enzyme-Linked Immunosorbent Assay) kit is an *in vitro* enzyme-linked immunosorbent assay for the quantitative measurement of Human DKK1 in serum, plasma and cell culture supernatants.

This assay employs an antibody specific for Human DKK1 coated on a 96-well plate. Standards and samples are pipetted into the wells and DKK1 present in a sample is bound to the wells by the immobilized antibody. The wells are washed and biotinylated anti-Human DKK1 antibody is added. After washing away unbound biotinylated antibody, HRP-conjugated Streptavidin is pipetted to the wells. The wells are again washed, a TMB substrate solution is added to the wells and color develops in proportion to the amount of DKK1 bound. The Stop Solution changes the color from blue to yellow, and the intensity of the color is measured at 450 nm.

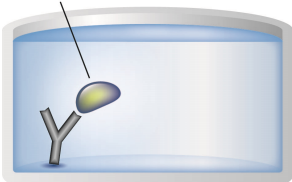
## 2. ASSAY SUMMARY

### Primary Capture Antibody



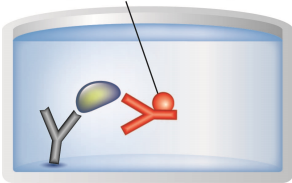
Prepare all reagents, samples and standards as instructed.

### Sample



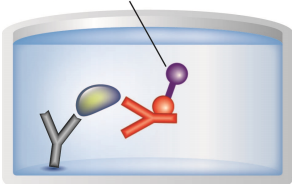
Add standard or sample to each well used. Incubate at room temperature

### Biotinylated Antibody



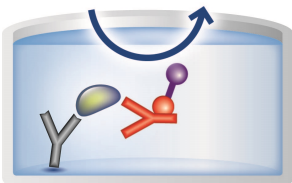
Add prepared biotin antibody to each well. Incubate at room temperature.

### Streptavidin-HRP



Add prepared Streptavidin solution. Incubate at room temperature.

### Substrate Colored Product



Add TMB One-Step Development Solution to each well. Incubate at room temperature. Add Stop Solution to each well. Read at 450nm immediately.

## 3. PRECAUTIONS

Please read these instructions carefully prior to beginning the assay.

Modifications to the kit components or procedures may result in loss of performance.

## 4. STORAGE AND STABILITY

Store kit at -20°C immediately upon receipt.

Refer to list of materials supplied for storage conditions of individual components. Observe the storage conditions for individual prepared components in section 9. Reagent Preparation.

## 5. MATERIALS SUPPLIED

Item	Amount	Storage Condition (Before Preparation)
DKK1 Microplate (12 x 8 wells)	96 wells	-20°C
20X Wash Buffer Concentrate	25 mL	-20°C
Recombinant Human DKK1 Standard	2 vials	-20°C
5X Assay Diluent D	15 mL	-20°C
5X Assay Diluent B	15 mL	-20°C
Biotinylated anti-Human DKK1	2 vial	-20°C
700X HRP-Streptavidin Concentrate	200 µL	-20°C
TMB One-Step Substrate Reagent	12 mL	-20°C
Stop Solution	8 mL	-20°C

### **6. MATERIALS REQUIRED, NOT SUPPLIED**

These materials are not included in the kit, but will be required to successfully utilize this assay:

- Microplate reader capable of measuring absorbance at 450 nm.
- Precision pipettes to deliver 2  $\mu$ l to 1 mL volumes.
- Adjustable 1-25 mL pipettes for reagent preparation.
- 100 mL and 1 liter graduated cylinders.
- Absorbent paper.
- Distilled or deionized water.
- Log-log graph paper or computer and software for ELISA data analysis.
- Tubes to prepare standard or sample dilutions.

### **7. LIMITATIONS**

- Do not mix or substitute reagents or materials from other kit lots or vendors.

### 8. TECHNICAL HINTS

- Samples generating values higher than the highest standard should be further diluted in the appropriate sample dilution buffers.
- Avoid foaming or bubbles when mixing or reconstituting components.
- Avoid cross contamination of samples or reagents by changing tips between sample, standard and reagent additions.
- Ensure plates are properly sealed or covered during incubation steps.
- Complete removal of all solutions and buffers during wash steps.
- When preparing your standards, it is very critical to briefly spin down the vial first. The powder may drop off from the cap when opening it if you do not spin down. Be sure to dissolve the powder thoroughly when reconstituting. After adding Assay Diluent to the vial, we recommend inverting the tube a few times, then flick the tube a few times, and then spin it down; repeat this procedure 3-4 times. This is a technique we find very effective for thoroughly mixing the standard without too much mechanical force.
- Do not vortex the standard during reconstitution, as this will destabilize the protein.
- Once your standard has been reconstituted, it should be used right away or else frozen for later use.
- Keep the standard dilutions on ice while during preparation, but the ELISA procedure should be done at room temperature.
- Be sure to discard the working standard dilutions after use – they do not store well.
- **This kit is sold based on number of tests. A ‘test’ simply refers to a single assay well. The number of wells that contain sample, control or standard will vary by product. Review the protocol completely to confirm this kit meets your requirements. Please contact our Technical Support staff with any questions.**

## 9. REAGENT PREPARATION

Equilibrate all reagents to room temperature (18-25°C) prior to use.

### 9.1 1X Assay Diluent D

5X Assay Diluent D should be diluted 5-fold with deionized or distilled water before use.

### 9.2 1X Assay Diluent B

5X Assay Diluent B should be diluted 5-fold with deionized or distilled water before use.

### 9.3 1X Wash Solution

If the 20X Wash Concentrate contains visible crystals, equilibrate to room temperature and mix gently until dissolved. Dilute 20 mL of Wash Buffer Concentrate into deionized or distilled water to yield 400 mL of 1X Wash solution.

### 9.4 1X Biotinylated DKK1 Detection Antibody

Briefly spin the Biotinylated anti-Human DKK1 vial before use. Add 100 $\mu$ L of 1X Assay Diluent B into the vial to prepare a detection antibody concentrate. Pipette up and down to mix gently (the concentrate can either be stored at 4°C for 5 days or aliquoted and frozen at -20°C for 2 months). The detection antibody concentrate must be diluted 80-fold with 1X Assay Diluent B prior to use in the Assay Procedure.

### 9.5 1X HRP-Streptavidin Solution

Briefly spin the 700X HRP-Streptavidin concentrate vial and pipette up and down to mix gently before use. HRP-Streptavidin concentrate must be diluted 700-fold with 1X Assay Diluent B prior to use in the Assay Procedure.

For example: Briefly spin the vial and pipette up and down to mix gently. Add 20  $\mu$ L of 700X HRP-Streptavidin concentrate into a tube with 14 mL 1X Assay Diluent B to prepare a final 700 fold diluted 1X HRP-Streptavidin solution (don't store the diluted solution for next day use). Mix well.



## 10. STANDARD PREPARATIONS

- Prepare serially diluted standards immediately prior to use. Always prepare a fresh set of standards for every use.
- Standard (recombinant protein) should be stored at -20°C or -80°C (recommended at -80°C) after reconstitution.

10.1 Briefly spin the vial of DKK1 Standard. Prepare the 900 ng/mL DKK1 **Stock Standard** by adding 1000  $\mu$ L 1X Assay Diluent D (for plasma/serum samples) or 1X Assay Diluent B (for cell culture supernatants) into the vial (see table below).

10.2 Ensure the powder is thoroughly dissolved by gentle mixing.

10.3 Label tubes #1-7.

10.4 Prepare **Standard #1** by adding 20  $\mu$ L 900 ng/mL **Stock Standard** to 580  $\mu$ L 1X Assay Diluent D or 1X Assay Diluent B into tube #1. Mix thoroughly and gently.

10.5 Pipette 300  $\mu$ L 1X Assay Diluent D or 1X Assay Diluent B into remaining tubes.

10.6 Prepare **Standard #2** by transferring 200  $\mu$ L from tube #1 to #2, mix thoroughly.

10.7 Prepare **Standard #3** by transferring 200  $\mu$ L from tube #2 to #3, mix thoroughly.

10.8 Using the table below as a guide, prepare further serial dilutions.

10.9 1X Assay Diluent D or 1X Assay Diluent B serves as the zero standard, (0 ng/mL).

# ASSAY PREPARATION

## Standard Dilution Preparation Table

Standard #	Volume to Dilute ( $\mu\text{L}$ )	Diluent ( $\mu\text{L}$ )	Total Volume ( $\mu\text{L}$ )	Starting Conc. ( $\text{pg/mL}$ )	Final Conc. ( $\text{pg/mL}$ )
1	20	580	1,000	900,000	30,000
2	200	300	500	30,000	12,000
3	200	300	500	12,000	4,800
4	200	300	500	4,800	1,920
5	200	300	500	1,920	768
6	200	300	500	768	307.2
7	200	300	500	307.2	122.9
8	0	300	300	0	0



## 11. SAMPLE PREPARATION

### **General Sample Information:**

- Sample dilution: 1X Assay Diluent D should be used for dilution of serum and plasma samples. 1X Assay Diluent B should be used for dilution of cell culture supernatants.
- Suggested dilution for normal serum/plasma: 2 fold.
- Please note that levels of the target protein may vary between different specimens. Optimal dilution factors for each sample must be determined by the investigator.

## 12. PLATE PREPARATION

- The 96 well plate strips included with this kit are supplied ready to use. It is not necessary to rinse the plate prior to adding reagents.
- Unused well strips should be returned to the plate packet and stored at 4°C.
- For statistical reasons, we recommend each sample should be assayed with a minimum of two replicates (duplicates).
- Well effects have not been observed with this assay. Contents of each well can be recorded on the template sheet included in the Resources section.

## **13. ASSAY PROCEDURE**

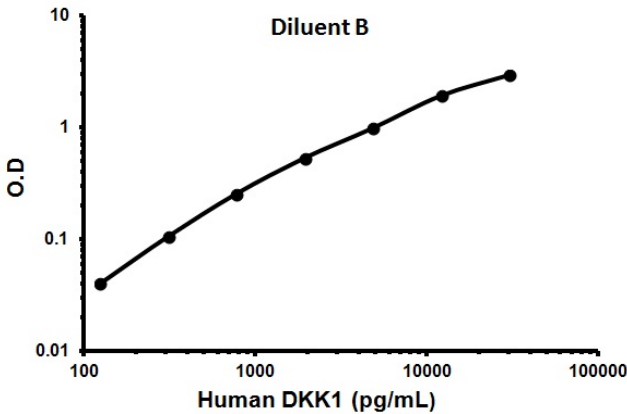
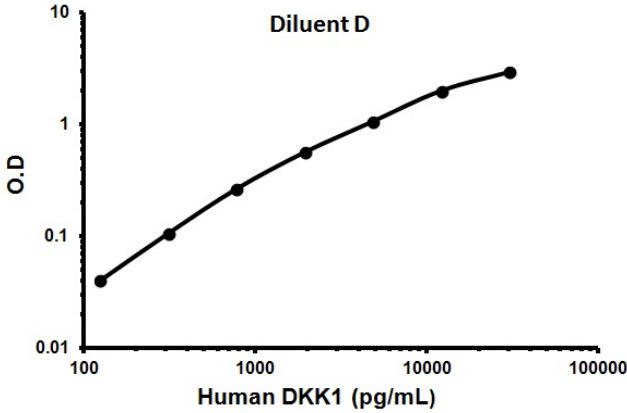
- **Equilibrate all materials and prepared reagents to room temperature (18 - 25°C) prior to use.**
  - **It is recommended to assay all standards, controls and samples in duplicate.**
- 13.1 Add 100  $\mu$ L of each standard (see Reagent Preparation section 10) and sample into appropriate wells. Cover well and incubate for 2.5 hours at room temperature or over night at 4°C with gentle shaking.
  - 13.2 Discard the solution and wash 4 times with 1X Wash Solution. Wash by filling each well with 1X Wash Solution (300  $\mu$ L) using a multi-channel Pipette or auto washer. Complete removal of liquid at each step is essential to good performance. After the last wash, remove any remaining liquid by aspirating or decanting. Invert the plate and blot it against clean paper towels.
  - 13.3 Add 100  $\mu$ L of 1X Biotinylated DKK1 Detection Antibody (Reagent Preparation section 9) to each well. Incubate for 1 hour at room temperature with gentle shaking.
  - 13.4 Discard the solution. Repeat the wash as in step 13.2.
  - 13.5 Add 100  $\mu$ L of 1X HRP-Streptavidin solution (see Reagent Preparation section 9) to each well. Incubate for 45 minutes at room temperature with gentle shaking.
  - 13.6 Discard the solution. Repeat the wash as in step 13.2.
  - 13.7 Add 100  $\mu$ L of TMB One-Step Substrate Reagent to each well.
  - 13.8 Incubate for 30 minutes at room temperature in the dark with gentle shaking.
  - 13.9 Add 50  $\mu$ L of Stop Solution to each well. Read at 450 nm immediately.

### **14. CALCULATIONS**

Calculate the mean absorbance for each set of duplicate standards, controls and samples, and subtract the average zero standard optical density. Plot the standard curve on log-log graph paper, with standard concentration on the x-axis and absorbance on the y-axis. Draw the best-fit straight line through the standard points.

## 15. TYPICAL DATA

**TYPICAL STANDARD CURVE** – Data provided for **demonstration purposes only**. A new standard curve must be generated for each assay performed.



Conc. (pg/mL)	O.D.	
	Assay Diluent D	Assay Diluent B
122.9	0.040	0.040
307.2	0.106	0.106
768	0.265	0.255
1,920	0.563	0.533
4,800	1.061	0.984
12,000	2.002	1.920
30,000	2.938	2.938

## 16. TYPICAL SAMPLE VALUES

### SENSITIVITY –

The minimum detectable dose of DKK1 is typically less than 100 pg/mL.

### RECOVERY –

Recovery was determined by spiking Human DKK1 into Human serum, plasma and cell culture media. Mean recoveries are as follows:

Sample Type	Average % Recovery	Range (%)
Serum	92.3	62-130
Plasma	72.8	59-110
Cell Culture Media	108.3	93-123

## LINEARITY OF DILUTION -

Serum Dilution	Average % Expected Value	Range (%)
1:2	98.1	89-112
1:4	96.2	88-111

Plasma Dilution	Average % Expected Value	Range (%)
1:2	95.6	84-103
1:4	92.5	80-102

Cell Culture Media Dilution	Average % Expected Value	Range (%)
1:2	99.5	90-113
1:4	96.3	87-109

## PRECISION –

	Intra-Assay	Inter-Assay
CV (%)	<10%	<12%

## 17. ASSAY SPECIFICITY

Cross Reactivity: This ELISA kit shows no cross-reactivity with the following cytokines tested: Human Angiogenin, BDNF, BLC, ENA-78, FGF-4, IL-1 $\alpha$ , IL-1 $\beta$ , IL-2, IL-3, IL-4, IL-5, IL-6, IL-7, IL-8, IL-9, IL-11, IL-12 p70, IL-12 p40, IL-13, IL-15, IL-309, IP-10, G-CSF, GM-CSF, IFN- $\gamma$ , Leptin (OB), MCP-1, MCP-2, MCP-3, MDC, MIP-1 $\alpha$ , MIP-1  $\beta$ , MIP-1 $\delta$ , PARC, PDGF, RANTES, SCF, TARC, TGF- $\beta$ , TIMP-1, TIMP-2, TNF- $\alpha$ , TNF- $\beta$ , TPO, VEGF.



## 18. TROUBLESHOOTING

<b>Problem</b>	<b>Cause</b>	<b>Solution</b>
Poor standard curve	Inaccurate pipetting	Check pipettes
	Improper standards dilution	Prior to opening, briefly spin the stock standard tube and dissolve the powder thoroughly by gentle mixing
Low Signal	Incubation times too brief	Ensure sufficient incubation times; change to overnight standard/sample incubation
	Inadequate reagent volumes or improper dilution	Check pipettes and ensure correct preparation
Large CV	Plate is insufficiently washed	Review manual for proper wash technique. If using a plate washer, check all ports for obstructions
	Contaminated wash buffer	Prepare fresh wash buffer
Low sensitivity	Improper storage of the ELISA kit	Store the reconstituted protein at -80°C, all other assay components 4°C. Keep substrate solution protected from light.

19. NOTES



**UK, EU and ROW**

Email: [technical@abcam.com](mailto:technical@abcam.com) | Tel: +44-(0)1223-696000

**Austria**

Email: [wissenschaftlicherdienst@abcam.com](mailto:wissenschaftlicherdienst@abcam.com) | Tel: 019-288-259

**France**

Email: [supportscientifique@abcam.com](mailto:supportscientifique@abcam.com) | Tel: 01-46-94-62-96

**Germany**

Email: [wissenschaftlicherdienst@abcam.com](mailto:wissenschaftlicherdienst@abcam.com) | Tel: 030-896-779-154

**Spain**

Email: [soportecientifico@abcam.com](mailto:soportecientifico@abcam.com) | Tel: 911-146-554

**Switzerland**

Email: [technical@abcam.com](mailto:technical@abcam.com)

Tel (Deutsch): 0435-016-424 | Tel (Français): 0615-000-530

**US and Latin America**

Email: [us.technical@abcam.com](mailto:us.technical@abcam.com) | Tel: 888-77-ABCAM (22226)

**Canada**

Email: [ca.technical@abcam.com](mailto:ca.technical@abcam.com) | Tel: 877-749-8807

**China and Asia Pacific**

Email: [hk.technical@abcam.com](mailto:hk.technical@abcam.com) | Tel: 400 921 0189 / +86 21 2070 0500

**Japan**

Email: [technical@abcam.co.jp](mailto:technical@abcam.co.jp) | Tel: +81-(0)3-6231-0940

[www.abcam.com](http://www.abcam.com) | [www.abcam.cn](http://www.abcam.cn) | [www.abcam.co.jp](http://www.abcam.co.jp)